

温室气体排放核查报告

Greenhouse Gas Emission Verification Report

受核查方：中车常州车辆有限公司

核查年度：2025 年度

核查标准：GB/T 32150-2025

报告编号：SPK-GHG-20250035

核查机构：南京思派克科技有限公司

报告日期：2026 年 06 月 01 日

1

1.1

1.2

1.3

2

2.1

2.2

2.3

2.4

3

3.1

3.2

3.3

3.4

3.5

3.6

3.7

3.8 3

3.9

3.10

3.11

3.12

4

4. 1

4. 2

4. 3

5

2025

1

2

3

4

5

2025 1 1 2025 12

31

1

2

CO₂

GB/T 32150-2025

ISO 14064-3: 2019

-
-
-
-

(1)

(2)

(3)

/

(4)

(5)

(6)

(7)

2026 03 15

10

(1)

(2)

(3)

(4)

(5)

(6)

(1)

(2)

(3)

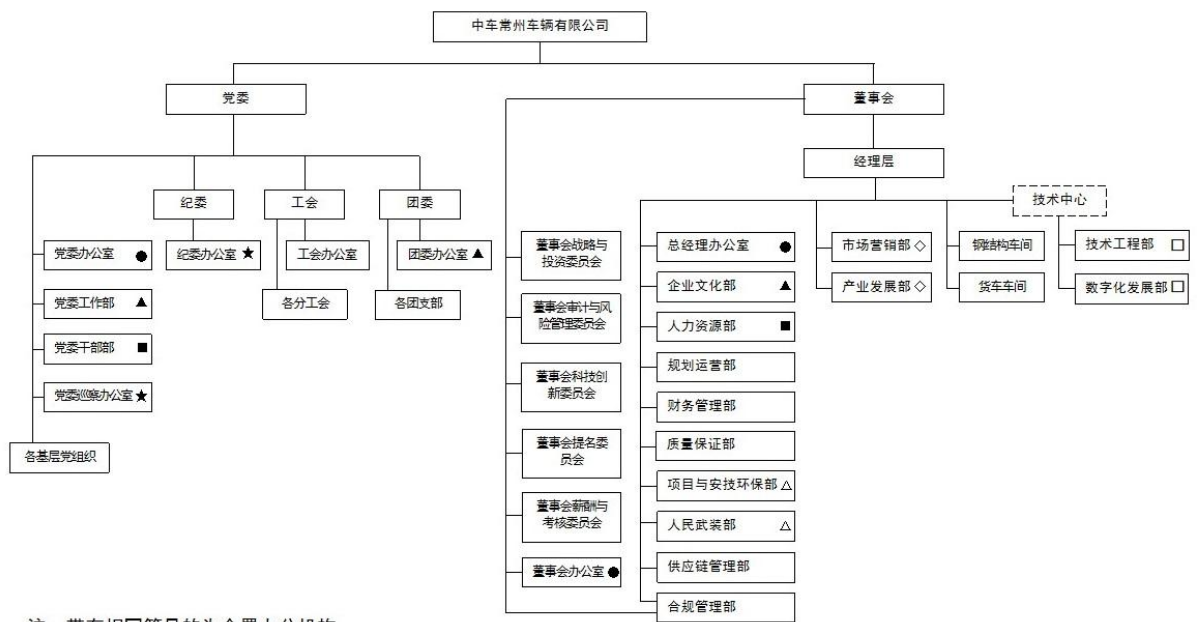
(4)

(5)

(6)

Materiality Threshold

5.00%



注：带有相同符号的为合署办公机构

(2)

(3)

$$E = AD \times CC \times OF \times 44/12 = 2.13 \times 0.020200 \times 0.9800 \times 44/12 = 0.15 \text{ tCO}_2$$

0.15 tCO₂

(1)

--	--	--

(2)

(3)

$$E = AD \times CC \times CF \times 44/12 = 107.68 \times 0.018900 \times 0.9800 \times 44/12 = 7.31 \text{ tCO}_2$$

7.31 tCO₂

(1)

(2)

(3)

$$E = AD \times CC \times OF \times 44/12 = 13501.27 \times 0.015300 \times 0.9900 \times 44/12 = 749.85 \text{ tCO}_2$$

749.85 tCO₂

CO₂

757.31 tCO₂

GB/T

32150-2025

GB/T 32150-2025

CO₂

$$E = AD \times EF = (E_{\text{grid}} - E_{\text{coal}} - E_{\text{gas}}) \times EF$$

AD

(MWh) EF

(tCO₂/MWh)

2		
2		

$$E = (5998.9000 - 0.0000) \times 0.582700 = 3495.56 \text{ tCO}_2$$

CO₂ 3495.56 tCO₂

GB/T 32150-2025

CO₂

$$E = AD \times EF$$

AD (GJ) EF (tCO₂/GJ)

2		
2		

$$E = 0.0000 \times 0.000000 = 0.00 \text{ tCO}_2$$

$$\text{CO}_2 \quad 0.00 \text{ tCO}_2$$

GB/T 32150-2025

$$E = (AD \times EF)$$

$$\begin{matrix} AD & i & (t) & EF \\ \text{(tCO}_2\text{/t)} & & & \end{matrix}$$

GB/T 32150-2025

					2

CO₂

283.33 tCO₂

SF

$$E = (\quad \times GWP)$$

				2	2

--	--	--	--	--

CO₂ 286.2339 tCO₂

3

3

3

		2	

(1) transport 595.40 tCO₂

(2) commute 1.07 tCO₂

(3) purchased 1189.90 tCO₂

(4) other 142.48 tCO₂

3

1928.85 tCO₂

(GHG

2025

1

2	4822.43 tCO ₂ e	3	1928.85 tCO ₂ e
	6951.28 tCO ₂ e		

(1) GB/T 32150-2025

(2)

(3)

(4)

(5)

(1)

(2)

(3)

(4)

1. GB/T 32150-2025

2.

3.

4.

5.
